

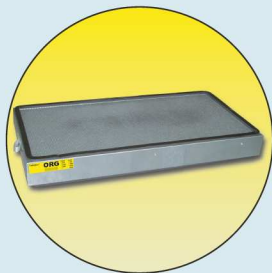
**RANGE H**

**NF** X 15-211 class 2



# ACTIVE CHARCOAL FILTERS AND HEPA H14 FILTER

## ACTIVE CHARCOAL FILTERS

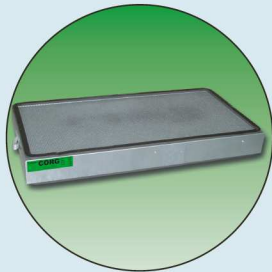


ORG200

Our filters are made with the best active charcoal. In order to offer the best guarantees, the quality of filters absorption was tested and approved by an independent laboratory. Every active charcoal filter is provided with a double anti-dust filter to insure an optimal filtration quality. Your health is protected. We offer you 3 filter types: one dedicated to organic vapors, one "Universal" for corrosive and organic vapors and one for formaldehyde vapors.

We offer 3 standard filters:

- typ ORG for organic vapors,
- typ CORG for corrosive and organic vapors (also called universal),
- typ FOR for formaldehyde vapors

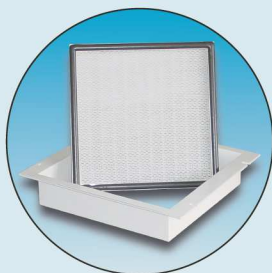


CORG201

CORG filter absorbs a large majority of commonly used chemicals : organic and inorganic acids, solvents and organics. This filter can be used in most cases.

We also offer **specialized and impregnated filters**, for exemple, for manipulation of specific chemicals. If you need further information please do not hesitate to contact-us.

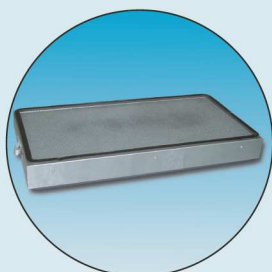
## HEPA H14 FILTER AND HEPA FILTER FRAME



SH200 + HEP200

When handling chemical powders, you have to use a standard particulate filter called HEPA. To guarantee the highest filtration efficiency, we choose a HEPA filter type H14 approved to the NF EN 1822 standards. In order to receive a HEPA filter, your ductless fume hood must be fitted with a dedicated frame type SH.

Your powder filter may need to be complemented by an additional active coal filter to provide you the best security and efficiency.









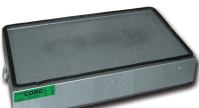



CAR200

If you want to use your ductless fume hood for powders only, a specific kit should be taken. For further information, please refer to the paragraph "Kit for using ductless fume hoods without active charcoal filter".

**N.B. : We deliver ductless fume hood only with either an activated carbon or a connecting kit for use without activated carbon filter (CAR).**

# ACTIVE COAL FILTERS SELECTION GUIDE

	Kind of filter	Filter for vapors	Reference from 2011	For	Reference before 2011			
<b>Fume Hoods</b>								
	 H 70 x W 390 x D 390 (mm)	Organic	ORG50	Range H Fume hoods : H60	-			
		Polyvalent <sup>(1)</sup>	CORG51		-			
		Formaldehyde	FOR50		-			
		Ammonia	AMM50		-			
	 H 70 x W 585 x D 380 (mm)	Organic	ORG200	Range H Fume hoods : H200, H201 H210, H211 PMSF200	ORG200			
		Corrosive	CORG201		COR200			
		Polyvalent <sup>(1)</sup>	CORG201		CORG201			
		Formaldehyde	FOR200		-			
		Ammonia	AMM200		-			
	 H 70 x W 730 x D 380 (mm)	Organic	ORG300 ORG400 ORG1300 ORG2300	Range H Fume hoods : H300, H301, H310, H311, H400, H401, H410, H411, H1300, H1301, H1310, H1311, H2300, H2301, H2310, H2311, PMSF400, PMSF1300, PMSF2300	ORG300 ORG400 ORG1300 ORG2300			
		Corrosive	CORG301 CORG401 CORG1301 CORG2301		COR300 COR400 COR1300 COR2300			
		Polyvalent <sup>(1)</sup>	CORG301 CORG401 CORG1301 CORG2301		CORG301 CORG401 CORG1301 CORG2301			
		Formaldehyde	FOR300 FOR400 FOR1300 FOR2300		- - - -			
		Ammonia	AMM300 AMM400 AMM1300 AMM2300		- - - -			
			 (2x) H 70 x W 585 x D 380 (mm)		Organic	ORG500 ORG1500 ORG2500 ORG3500	Range H Fume hoods : H500, H501, H510, H511, H1500, H1501, H1510, H1511, H2500, H2501, H2510, H2511, H3500, H3501, H3510, H3511, PMSF1500	ORG500 ORG1500 ORG2500 ORG3500
					Corrosive	CORG501 CORG1501 CORG2501 CORG3501		COR500 COR1500 COR2500 COR3500
					Polyvalent <sup>(1)</sup>	CORG501 CORG1501 CORG2501 CORG3501		CORG501 CORG1501 CORG2501 CORG3501
					Formaldehyde	FOR500 FOR1500 FOR2500 FOR3500		- - - -
Ammonia	AMM500 AMM1500 AMM2500 AMM3500			- - - -				
	 H 100 x W 565 x D 405 (mm)	Organic	ORG203	Compliant with MF3-AS	ORG203			
		Corrosive	CORG203	Compliant with MF3-BE	CORG203			
		Polyvalent <sup>(1)</sup>	CORG203	Compliant with MF3-F	-			
		Formaldehyde	FOR203	Compliant with MF3-K	-			
	 H 100 x W 755 x D 405 (mm)	Organic	ORG303	Compliant with MF4-AS	ORG303			
		Corrosive	CORG303	Compliant with MF4-BE	CORG303			
		Polyvalent <sup>(1)</sup>	CORG303	Compliant with MF4-F	-			
		Formaldehyde	FOR303	Compliant with MF4-K	-			
		Specific, contact-us.	Don't forget, we are able to provide specialised filters for specific applications for fume hoods, filtering ventilation cabinets, filtration boxes... in standard manufacturing and in specific manufacturing, contact-us for more information.					

<sup>(1)</sup> organic + corrosive. CORG polyvalent active coal filters can adsorb the most common chemical products used: organic and inorganic acids, organic compounds or solvents.

The manufacturer keeps the right to modify technical characteristics without notice. 12/2013

Flammable cabinets

Corrosive cabinets

Toxic cabinets and multirisk

Pesticide range

Fume hoods, filtering cabinets - Ventilation

Retention and Cans

Anti-fire equipments and Files cabinets

Showers and first-aid equipments

**RANGE H**

**NF** X 15-211 class 2



# Labopur® DUCTLESS FUME HOOD SELECTION GUIDE

Step 1	Step 2	Step 3	You order the following article				Model equipped (if available)		
Choose your ductless fume hood	Do you want a base trough and HPL work top?	You manipulate	Ductless fume hood model	Filters					
				Particulate filter HEPA H14 model	Active coal filter model	Must have accessories			
Explanation made on our H200	YES	Liquids	Organics	H200	-	ORG200	-	H204	
			Corrosives and/or Organics	H200	-	CORG201 <sup>(1)</sup>	-	H205	
			Formaldehyde	H200	-	FOR200	-	H203	
		Powders		H201	HEP200	CAR200	SH200	H206	
		Powders + Liquids	Organics	H201	HEP200	ORG200	SH200	H209	
			Corrosives and/or Organics	H201	HEP200	CORG201 <sup>(1)</sup>	SH200	H207	
			Formaldehyde	H201	HEP200	FOR200	SH200	H208	
		NO	Liquids	Organics	H210	-	ORG200	-	-
				Corrosives and/or Organics	H210	-	CORG201 <sup>(1)</sup>	-	-
	Formaldehyde			H210	-	FOR200	-	-	
	Powders		H211	HEP200	CAR200	SH200	-		
	Powders + Liquids		Organics	H211	HEP200	ORG200	SH200	-	
			Corrosives and/or Organics	H211	HEP200	CORG201 <sup>(1)</sup>	SH200	-	
			Formaldehyde	H211	HEP200	FOR200	SH200	-	

**N.B.:** If you take a ductless fume hood **with** a HEPA H14 filter but **without** an active coal filter you must take a "Kit for using without active coal filter" model CAR with a "H14 Hepa filter frame" model SH.

<sup>(1)</sup> The latest generation CORG filter absorbs a large majority of chemicals commonly used in laboratories: organic and inorganic, solvents and organic.

The manufacturer keeps the right to modify technical characteristics without notice. Edition 01/2013.

Flammable cabinets

Corrosive cabinets

Toxic cabinets and multirisk

Pesticide range

Fume hoods, filtering cabinets - Ventilation

Retention and Cans

Anti-fire equipments and File cabinets

Showers and first-aid equipments